



THE PLAZA AT SHOAL CREEK

152 Highway & Flintlock Road (SWQ)

Kansas City/Liberty, Missouri



2,415 SF END CAP SPACE FOR LEASE

DEMOGRAPHICS

	1 mile	3 miles	5 miles
Estimated Population	5,467	50,941	104,696
Avg. Household Income	\$102,474	\$125,480	\$123,413

- Arguably the #1 regional market in the metropolitan area
- Center includes Aldi and JC Penney anchors on a major commercial intersection in the Kansas City/Liberty, MO trade area
- Join over one million sq ft of traffic generators at this intersection including JC Penney, Kohl's, Home Depot, Walmart Supercenter, Super Target, Bed Bath & Beyond, Sprouts, Best Buy, and many others
- The City of Liberty is recognized by CNN/Money Magazine as the 7th Best Place to Live in America



CLICK HERE TO VIEW MORE LISTING INFORMATION

For More Information Contact:

TONY DETOMMASO | 816.412.7308 | tdetommaso@blockandco.com

DAVID BLOCK | 816.412.7400 | dblock@blockandco.com

Exclusive Agents



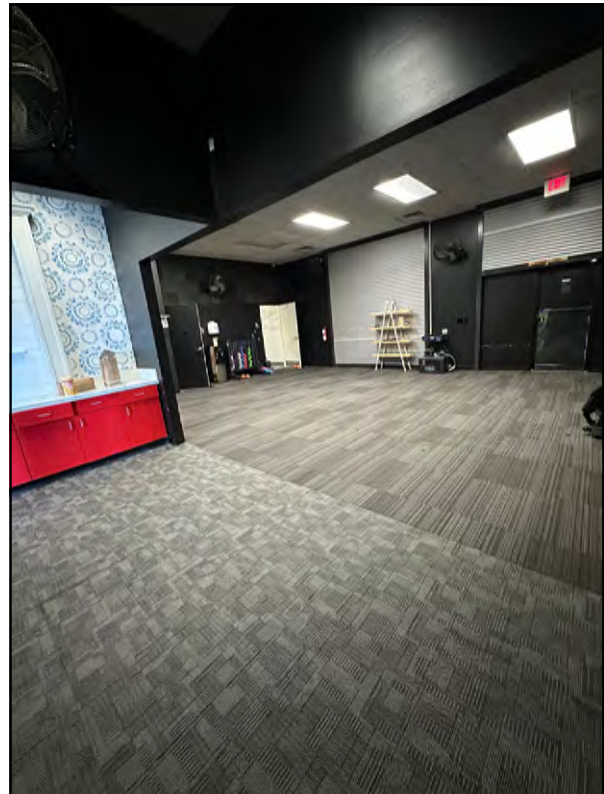


THE PLAZA AT SHOAL CREEK

152 Highway & Flintlock Road (SWQ)

Kansas City/Liberty, Missouri

2,415 SF SPACE PHOTOS | 8306 N. OXFORD AVENUE



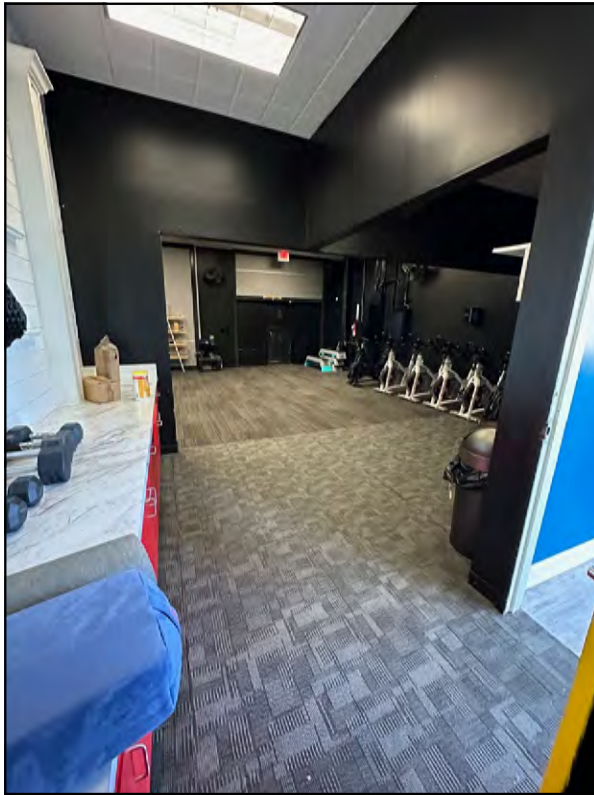


THE PLAZA AT SHOAL CREEK

152 Highway & Flintlock Road (SWQ)

Kansas City/Liberty, Missouri

2,415 SF SPACE PHOTOS | 8306 N. OXFORD AVENUE





THE PLAZA AT SHOAL CREEK

152 Highway & Flintlock Road (SWQ)
Kansas City/Liberty, Missouri

AERIAL



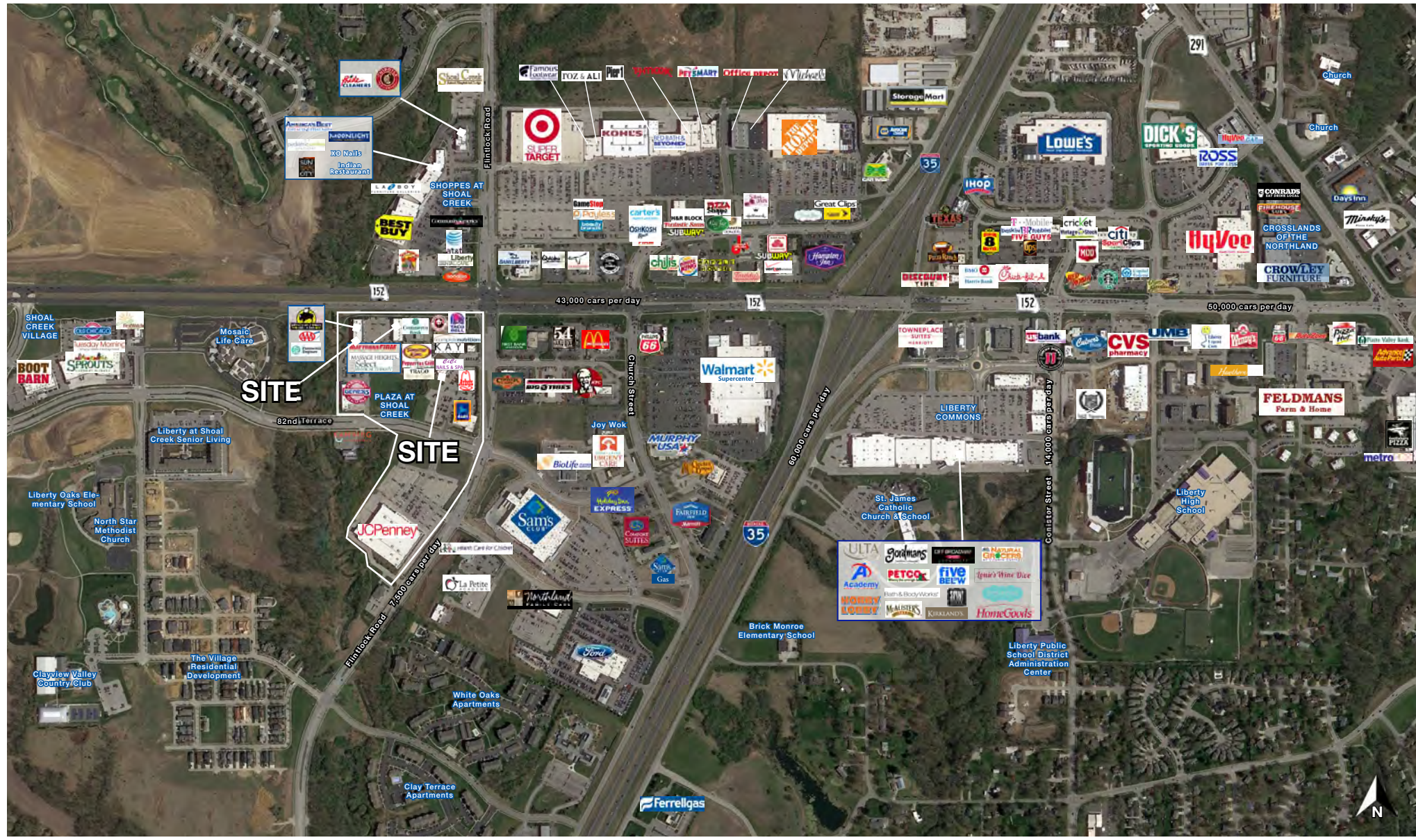
All information furnished regarding property for sale or lease is from sources deemed reliable, but no warranty or representation is made as to the accuracy thereof and the same is subject to errors, omissions, changes of prices, rental or other conditions, prior sale or lease or withdrawal without notice.



THE PLAZA AT SHOAL CREEK

152 Highway & Flintlock Road (SWQ)
Kansas City/Liberty, Missouri

AERIAL



All information furnished regarding property for sale or lease is from sources deemed reliable, but no warranty or representation is made as to the accuracy thereof and the same is subject to errors, omissions, changes of prices, rental or other conditions, prior sale or lease or withdrawal without notice.

THE PLAZA AT SHOAL CREEK

152 Highway & Flintlock Road (SWQ)
Kansas City/Liberty, Missouri

CO-TENANTS

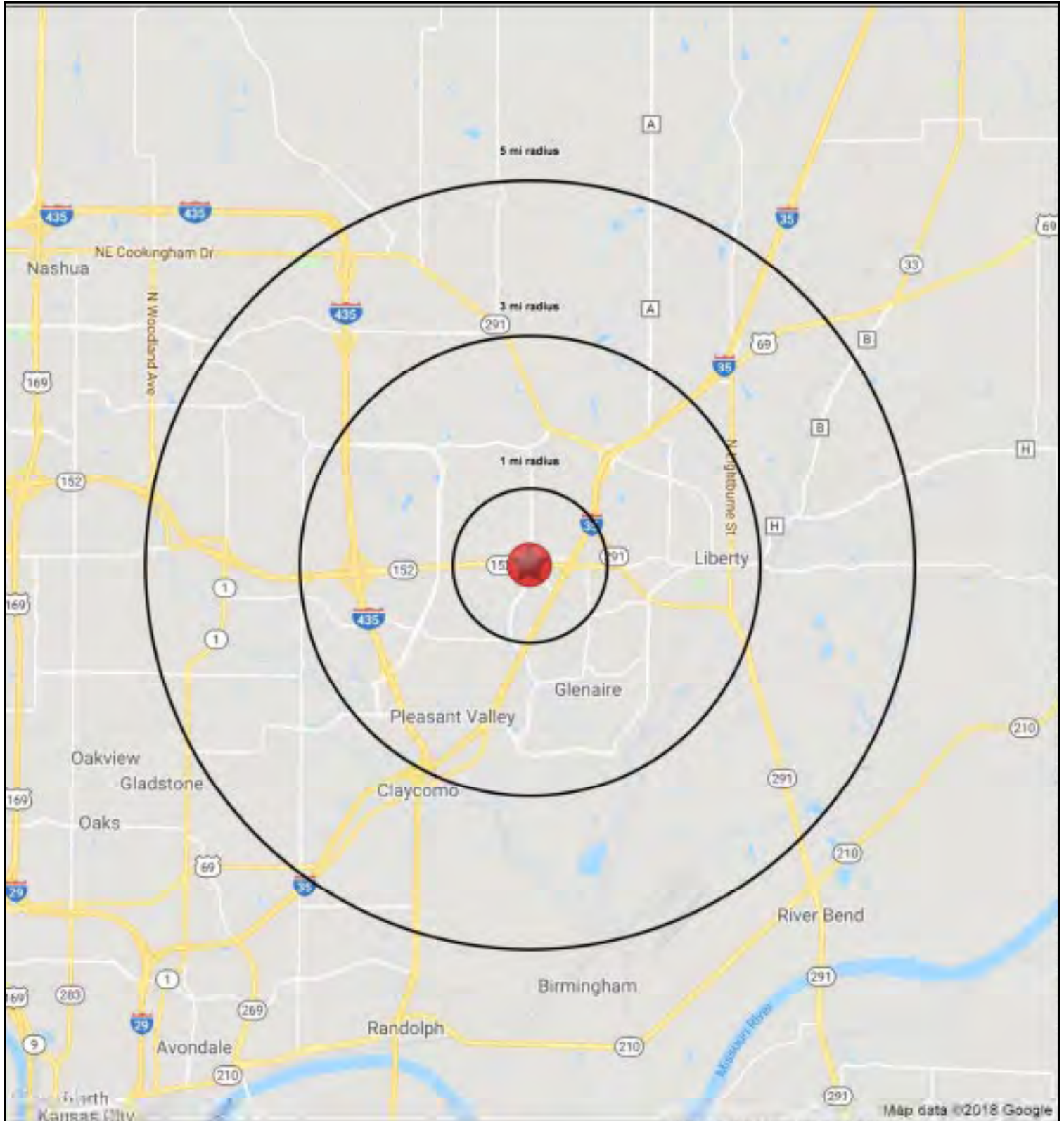




THE PLAZA AT SHOAL CREEK

152 Highway & Flintlock Road (SWQ)

Kansas City/Liberty, Missouri





THE PLAZA AT SHOAL CREEK

152 Highway & Flintlock Road (SWQ)

Kansas City/Liberty, Missouri

8304 N Oxford Ave Kansas City, MO 64158	1 mi radius	3 mi radius	5 mi radius
Population			
2023 Estimated Population	5,467	50,941	104,696
2028 Projected Population	5,634	52,559	109,963
2020 Census Population	5,393	50,031	102,674
2010 Census Population	3,246	41,624	86,742
Projected Annual Growth 2023 to 2028	0.6%	0.6%	1.0%
Historical Annual Growth 2010 to 2023	5.3%	1.7%	1.6%
2023 Median Age	33.9	36.4	36.8
Households			
2023 Estimated Households	2,327	19,425	39,967
2028 Projected Households	2,442	20,446	42,738
2020 Census Households	2,273	18,821	38,676
2010 Census Households	1,332	15,275	32,404
Projected Annual Growth 2023 to 2028	1.0%	1.1%	1.4%
Historical Annual Growth 2010 to 2023	5.7%	2.1%	1.8%
Race and Ethnicity			
2023 Estimated White	80.4%	83.0%	81.8%
2023 Estimated Black or African American	8.6%	6.2%	7.0%
2023 Estimated Asian or Pacific Islander	4.0%	3.7%	3.3%
2023 Estimated American Indian or Native Alaskan	0.3%	0.3%	0.3%
2023 Estimated Other Races	6.8%	6.8%	7.5%
2023 Estimated Hispanic	6.4%	6.1%	7.1%
Income			
2023 Estimated Average Household Income	\$102,474	\$125,480	\$123,413
2023 Estimated Median Household Income	\$96,537	\$107,146	\$102,958
2023 Estimated Per Capita Income	\$43,674	\$48,033	\$47,228
Education (Age 25+)			
2023 Estimated Elementary (Grade Level 0 to 8)	1.3%	2.1%	1.7%
2023 Estimated Some High School (Grade Level 9 to 11)	1.6%	2.4%	3.1%
2023 Estimated High School Graduate	24.8%	23.0%	23.9%
2023 Estimated Some College	18.1%	21.7%	22.4%
2023 Estimated Associates Degree Only	9.0%	9.1%	9.4%
2023 Estimated Bachelors Degree Only	31.4%	27.0%	25.7%
2023 Estimated Graduate Degree	13.6%	14.8%	13.7%
Business			
2023 Estimated Total Businesses	426	1,706	2,662
2023 Estimated Total Employees	4,582	14,581	23,933
2023 Estimated Employee Population per Business	10.7	8.5	9.0
2023 Estimated Residential Population per Business	12.8	29.9	39.3

©2023, Sites USA, Chandler, Arizona, 480-491-1112 Demographic Source: Applied Geographic Solutions 4/2023, TIGER Geography - RS1

This report was produced using data from private and government sources deemed to be reliable. The information herein is provided without representation or warranty.

